

FREEHOLD



House - Terraced

**MOIRA STREET,
BELGRAVE,
LEICESTER, LE4 6LB**

£250,000

FEATURES

- Extended Mid Terraced
- Dining Room
- Downstairs Bathroom
- Rear Garden
- Lounge
- Kitchen
- Three Bedrooms
- Gas Central Heating



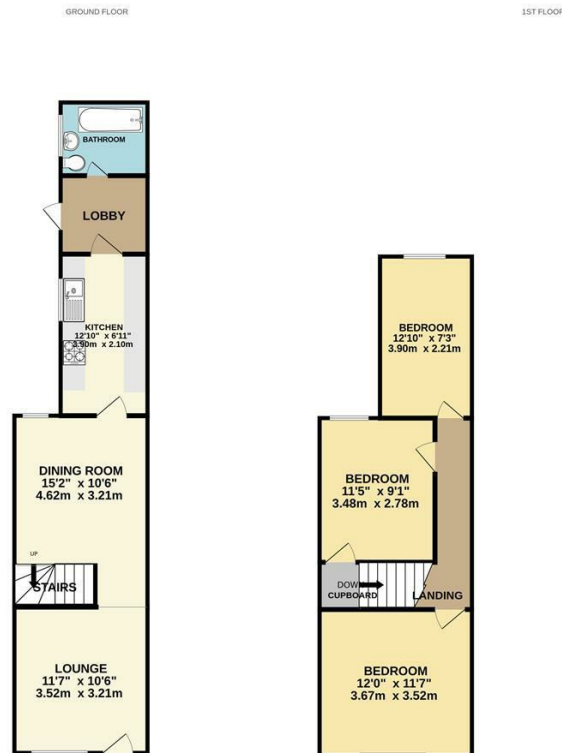
SETHS

3 Bedroom House - Terraced located in Leicester

*** IDEAL FOR FIRST TIME BUYERS - POPULAR LOCATION *** Extended mid terraced situated in this popular area of Belgrave situated within walking distance to Melton Road.

Briefly the accommodation comprises of a lounge, dining room, kitchen, ground floor bathroom and three bedrooms. The property benefits from gas fired central heating, double glazed and a rear yard.

Viewing is by appointment only



While every attempt has been made to ensure the accuracy of the description contained here, measurements of doors, windows, rooms and any other items are approximate and no responsibility is taken for any error, omission or misstatement. This plan is for illustrative purposes only and should be used as such by any prospective purchaser. The services, systems and appliances shown have not been tested and no guarantee is given as to their operability or efficiency can be given. Made with Metropix ©2023

Call us on
0116 266 9977

sales@seths.co.uk
www.seths.co.uk

Council Tax Band
A

Energy Efficiency Rating		Current	Potential
<i>Very energy efficient - lower running costs</i>			
(92 plus) A			
(81-91) B			
(69-80) C			
(55-68) D			
(39-54) E			
(21-38) F			
(1-20) G			
<i>Not energy efficient - higher running costs</i>			
England & Wales		EU Directive	
		2002/91/EC	

Agents Note: Whilst every care has been taken to prepare these particulars, they are for guidance purposes only. All measurements are approximate and are for general guidance purposes only and whilst every care has been taken to ensure their accuracy, they should not be relied upon and potential buyers are advised to recheck the measurements.

